

AC DRIVES **FDD 3000**



AC DRIVES

FDD 3000

With the AC drives of the FDD 3000 series, you solve all drive tasks in low-voltage applications flexibly and economically. Asynchronous motors can be precisely and reliably controlled with the compact FDD 3000 AC drives. The seamless integration into the SIGMATEK automation system simplifies engineering and maintenance.



EFFICIENT AND RELIABLE

Through the combination of compactness, performance and functionality, you can optimize your drive concept and therewith, your production process using the FDD 3000 series. The AC drives cover a power range of 0.37 to 90 kW and are available in seven sizes.

Asynchronous motors (IE2, IE3) can be controlled precisely and reliably. Thanks to an overload capacity of up to 180 %, the FDD 3000 units are ideal for applications that require a high torque for short time.

FDD 3000 AT A GLANCE



PRECISE MOTOR CONTROL

- Dynamic V/Hz regulation
- Open Loop: 8 different control modes
- Heavy Duty and Normal Duty

QUICK START

- Comfortable configuration in the all-in-one engineering tool LASAL
- LED operating unit for manual setup

FULLY INTEGRATED COMMUNICATION

- Simple handling via seamless integration into the SIGMA TEK automation system
- CAN & VARAN interfaces for simple connection

ROBUST AND RELIABLE CONSTRUCTION

- Layered circuit boards despite harsh environmental conditions
- High overload capacity: 180 % overload for 3 s / 150 % overload for 60 s
- Reliable cooling via forced convection with internal fans

SAFETY AND I/Os INTEGRATED

- 1 two-channel STO, SIL 3, PL e
- 2 analog inputs
- 2 analog outputs
- 4 digital inputs
- 1 digital in-/output (configurable)
- 1 relay output (brake control)

POWER FILTER ON BOARD

For industry class A, power filters for class B are optionally available

FOR HARSH ENVIRONMENTS

- Operating temperature -20 °C to 40 °C at 3 kHz switching frequency or with derating, up to 60 °C in sizes 2-4 and up to 55 °C in sizes 5-8
- Humidity 95 % non-condensing

THE RIGHT CHOICE FOR MANY APPLICATIONS

It is impossible to imagine industrial production without economical AC drives. Continuous speed control, adapted to the application, enables an optimized manufacturing process – with the

additional advantage of energy-saving operation. Thanks to the broad performance range from 0.37 to 90 kW, the FDD 3000 are the right choice for various applications:



- Pumps, fans and compressors
- Conveyor technology
- Lifting equipment and winches
- Process technology: mixers, kneaders, crushers, agitators, centrifuges, extruders
- Sorting systems and packaging technology

For lifting applications, an adjustable control for mechanical braking systems is available.



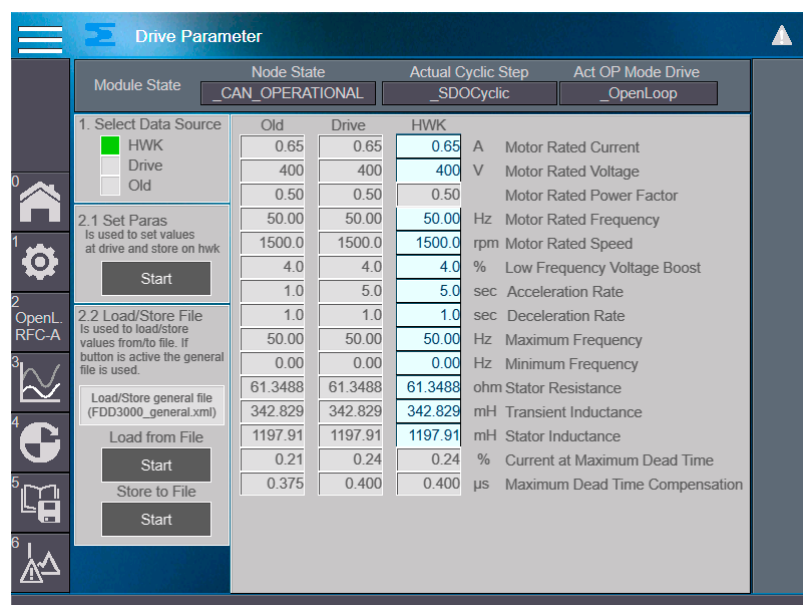
The FDD AC drives significantly improve the productivity and performance of your machines and systems.

SIMPLE INITIAL STARTUP WITH AUTOTUNE

The FDD 3000 AC drives can be easily and comfortably configured in the all-in-one design environment LASAL. In the “Visual Object View” (VOV), the parameters can

be entered clearly. You can define the AC drive parameters offline and then over an online connection, test and operate it. An autotune function is also available. Mo-

tion commands can be conveniently sent from the control system to the FDD 3000 AC drives. Since all parameters and configuration data are stored centrally in the controller, even replacing an AC drive is very simple via Plug&Play.



In LASAL's graphic interface, just set the most important parameters and you are ready to go: Thanks to the integration into the SIGMATEK control system, handling is extremely comfortable.



FDD 3000 FEATURES THAT CONVINCE

Robust and Efficient

The high-performance FDD3000 drives convince with perfect speed and torque control of AC motors, as well as the highest reliability – even in harsh environmental conditions. The standard coating provides even more protection from adverse environmental influences. Power-failure bridging keeps the drive in operation even during a power failure.

STO to PL e Integrated

Functional Safety is an integral part of the FDD 3000 range: A two-channel STO (Safe Torque Off) ensures a safe shutdown according to EN/IEC 61800-5-2 SIL 3 and EN ISO 13849-1 PL e. The safe inputs can also be used to implement an emergency stop function without protection.

Quick Start

The FDD 3000 drives are fully integrated into the SIGMATEK control system and the all-in-one engineering platform LASAL. This reduces the initial start-up, configuration and Safety integration enormously. The integrated autotune function is started via the graphic interface. This means that the FDD 3000 can be perfectly matched to a wide variety of motors – Plug&Play.

Handling - Even Wireless or Remote

Setup and maintenance of the FDD 3000 AC drives can even be performed wirelessly, combined with a SIGMATEK controller and the optional Wifi adapter. In addition, the devices can be conveniently serviced remotely via the remote access platform – whether initial start-up, diagnostics, maintenance and updates.

Flexible Connectivity

Different communication interfaces enable flexible integration of the AC drives into industrial networks: CAN and real-time Ethernet VARAN.

Space- and Energy-saving

The compact design and efficient heat regulation allow the space-saving installation of several modules in the control cabinet. Through exact speed control, dynamic V/f regulation and standby mode, the energy consumption is reduced, productivity maximized and at the same time, operating costs are lowered.

FDD 3000 SPECIFICATIONS

Frame Size	Dimensions W x H x D (mm)	Weight (kg)
2	75 x 205 x 150	1.3
3	90 x 226 x 160	1.5
4	115 x 277 x 175	3.13
5	143 x 391 x 200	7.4
6	210 x 391 x 227	14
7	270 x 557 x 280	28
8	310 x 804 x 290	52



FRAME SIZE

- Screw-mounting on mounting plate: standard (IP20)
- DIN rail mounting: for framesize 2 (IP20)
- Push-through mounting: for framesize 5-8 (IP54)

TECHNICAL DATA

- Approval: UL, CE, TÜV, RoHS, cUL, CTick and EAC
- Integrated brake chopper, integrated EMC filter (easily removable), DC bus connection available
- Clock frequency
 - framesize 2-4: 0.667 | 1 | 2 | 3 | 4 | 6 | 8 | 12 | 16 kHz
 - framesize 5-8: 2 | 3 | 4 | 6 | 8 | 12 | 16 kHz
- Output frequency range 0 to 550 Hz
- Frequency precision ± 0.02 % full range
- Frequency resolution 0.01 Hz
- FSZ 2-4: AC supply 1- and 3-phase 200-240 VAC ± 10 %, input frequency 45-66 Hz
- FSZ 2-8: AC supply 3-phase 380-480 VAC ± 10 %, input frequency 45-66 Hz
- Current controller cycle time 166 μ s
- Overload heavy duty 180% for 3s or 150% for 60s and normal duty 110% for 60s
- Ambient Temperature -20°C up to 40°C Derating up to 60°C
- Mounting height 0-3000m Derating 1% every 100m at 1000m up to 3000m
- Not periodic Vibration IEC 60068-2-64
- Mechanical shockproof IEC 60068-29
- Safe Torque Off IEC61800-5-2 SIL3 and EN ISO 1349-1

200-240 VAC ± 10 %

Article Number	Frame Size	Power Supply	Overload Application (Heavy Duty) 180 %			Normal Load Application (Normal Duty) 110 %		
			Max. Continuous Current (A)	Motor Output (kW)	Motor Output (HP)	Max. Continuous Current (A)	Motor Output (kW)	Motor Output (HP)
FDD 3022.00024	2	1- and 3-phase	2.4	0.37	0.5	For Normal Load applications, use Overload application ratings.		
FDD 3022.00033	2		3.3	0.55	0.75			
FDD 3022.00042	2		4.2	0.75	1			
FDD 3022.00056	2		5.6	1.1	1.5			
FDD 3022.00075	2		7.5	1.5	2			
FDD 3032.00100	3		10	2.2	3			
FDD 3042.00133	4	3-phase	13.3	3	3			
FDD 3042.00176	4		17.6	4	5			

380-480 VAC +/-10 %

Article Number	Frame Size	Power Supply	Overload Application (Heavy Duty) 180 %			Normal Load Application (Normal Duty) 110 %		
			Max. Continuous Current (A)	Motor Output (kW)	Motor Output (HP)	Max. Continuous Current (A)	Motor Output (kW)	Motor Output (HP)
FDD 3024.00013	2	3-phase	1.3	0.37	0.5	For Normal Load applications, use Overload application ratings.		
FDD 3024.00018	2		1.8	0.55	0.75			
FDD 3024.00023	2		2.3	0.75	1			
FDD 3024.00032	2		3.2	1.1	1.5			
FDD 3024.00041	2		4.1	1.5	2			
FDD 3034.00056	3		5.6	2.2	3			
FDD 3034.00073	3		7.3	3	3			
FDD 3034.00094	3		9.4	4	5			
FDD 3044.00135	4		13.5	5.5	7.5			
FDD 3044.00170	4		17	7.5	10			
FDD 3054.00270	5		27	11	20	31	15	20
FDD 3054.00300	5		30	15	20	30	15	20
FDD 3064.00350	6		35	15	25	38	18.5	25
FDD 3064.00420	6		42	18.5	30	48	22	30
FDD 3064.00470	6		47	22	30	63	30	40
FDD 3074.00660	7		66	30	50	79	37	60
FDD 3074.00770	7		77	37	60	94	45	60
FDD 3074.01000	7		100	45	75	112	55	75
FDD 3084.01340	8		134	55	100	155	75	100
FDD 3084.01570	8		157	75	125	184	90	125

COMMUNICATION INTERFACES



SI-CAN



SI-VARAN

Article Number	09-920-001	09-920-003
Interfaces	1x CAN	1x VARAN-In, 1x VARAN-Out

INTERNATIONAL



AUSTRIA – CORPORATE HEADQUARTERS

SIGMATEK GmbH & Co KG
3112 Lamprechtshausen
Sigmatekstraße 1
Tel. +43 6274 43 21-0
Fax +43 6274 43 21-18
www.sigmatek-automation.com
office@sigmatek.at



CHINA

SIGMATEK Automation CO., Ltd
315040 Ningbo · Room 805,
Building A, No. 555, Jingjia Road
Tel. +86 574 87 75 30 85
Fax +86 574 87 75 30 65
www.sigmatek-automation.cn
office@sigmatek-automation.cn



GERMANY

SIGMATEK GMBH
76829 Landau
Marie-Curie-Straße 9
Tel. +49 6341 94 21-0
Fax +49 6341 94 21-21
www.sigmatek-automation.com
office@sigmatek.de



BELGIUM

SigmaControl B.V.
2992 LC Barendrecht
Tel. +32 329 770 07
www.sigmacontrol.eu
office@sigmacontrol.eu



DENMARK

SH GROUP A/S
5700 Svendborg
Tel. +45 6221 78 10
www.shgroup.dk
sigmatek@shgroup.dk



FINLAND

SARLIN Oy Ab
01610 Vantaa
Tel. +358 105 50 40 00
www.sarlin.com
asiakaspalvelu@sarlin.com



INDIA

SIGMA CONTROLS
411045 Pune
www.sigmatek-automation.in
office@sigmatek-automation.in



GREAT BRITAIN

SIGMATEK Automation UK Limited
Nottingham, NG7 2RF
Nottingham Science Park
10 Edison Village
Tel. +44 115 922 24 33
Fax +44 115 922 49 91
www.sigmatek-automation.co.uk
office@sigmatek-automation.co.uk



ITALY

SIGMATEK Ufficio di rappresentanza
Via Varisella, 17
10040 Givoletto (TO)
Tel. +39 347 66 28 749
www.sigmatek-automation.it
office@sigmatek.it



KOREA

SIGMATEK Automation Korea CO., Ltd
08500 Seoul · 4th floor, Digital Industrial Bldg 169-28
Gasam digital 2-ro Geumcheon-gu
Tel. +82 2 867 15 66
Fax +82 70 82 44 44 88
www.sigmatek-automation.kr
office@sigmatek-automation.kr



ITALY

SIGMA MOTION SRL
36075 Montebelluna Maggiore (VI)
Tel. +39 0444 60 75 75
www.sigmamotion.it
info@sigmamotion.it



JAPAN

SUMITOMO HEAVY INDUSTRIES, LTD. –
Mechatronics Division
141-6025 Tokyo
Tel. +81 3 67 37 25 32
www.shi-mechatronics.jp
ryuji.nakajima@shi-g.com



NETHERLANDS

SigmaControl B.V.
2992 LC Barendrecht
Tel. +31 180 69 57 77
www.sigmacontrol.eu
office@sigmacontrol.eu



PORTUGAL

Plasdan Automation & Add-On Systems
2430-379 Marinha Grande
Tel. +351 244 57 21 10
www.plasdan.pt
info@plasdan.pt



POLAND

SIGMATEK Representative Office
87-100 Toruń
ul. Kombajnowa 26
Tel. +48 791 54 97 77
www.sigmatek-automation.pl
office@sigmatek-automation.pl



SWITZERLAND

SIGMATEK Schweiz AG
8308 Illnau-Effretikon
Schmittstrasse 9
Tel. +41 52 354 50 50
Fax +41 52 354 50 51
www.sigmatek-automation.ch
office@sigmatek.ch



USA

SIGMATEK U.S. Automation, Inc.
44133 North Royalton, Ohio
10147 Royalton Rd., Suite N.
Tel. +1 440 582 12 66
Fax +1 440 582 14 76
www.sigmatek-automation.us
office@sigmatek.us



SWEDEN

SIGBI Automation AB
254 64 Helsingborg
Tel. +46 42 654 00
www.sigmatek.se
info@sigmatek.se



SOUTH AFRICA

Anytech (PTY) Ltd.
2169
Tel. +27 11 708 19 92
www.anytech.co.za
erika.neethling@anytech.co.za



THAILAND

SCM Allianz Co. Ltd.
10400 Bangkok
Tel. +66 2 615 48 88
www.scma.co.th
contact@scma.co.th



TURKEY

Dedem Mekatronik
35477 Menderes – İzmir
Tel. +90 232 47 21 848
www.dedemmekatronik.com
satis@dedemmekatronik.com