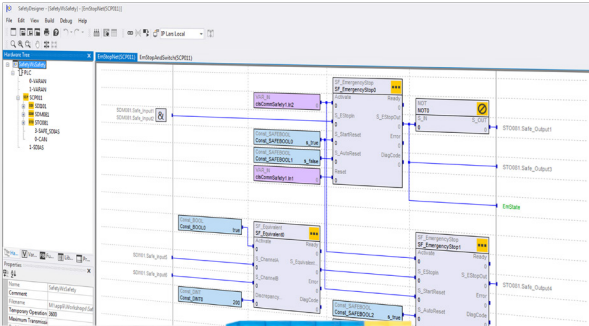


FUTURE OF AUTOMATION



SSK 002
€ **1,599**
net

LASAL ALL-IN-ONE ENGINEERING TOOL

With object-oriented programming (OOP), you achieve the highest modularity, clarity and reusability. Using software objects, machine functions can be simulated and modularly combined in a toolkit system. Graphic representation provides a quick overview of the project interrelationships – even with complex applications. An extensive functions library is available. This simplifies and accelerates engineering enormously.

 **Austria**
SIGMATEK GmbH & Co KG
5112 Lamprechtshausen
Sigmatekstraße 1
Tel. +43/62 74/43 21-0
Fax +43/62 74/43 21-18
office@sigmatek.at

 **Germany**
SIGMATEK GMBH
76829 Landau
Marie-Curie-Straße 9
Tel. +49/63 41/94 21-0
Fax +49/63 41/94 21-21
office@sigmatek.de

 **Switzerland**
SIGMATEK Schweiz AG
8308 Illnau-Effretikon
Schmittstrasse 9
Tel. +41/52/354 50 50
Fax +41/52/354 50 51
office@sigmatek.ch

www.sigmatek-automation.com

8100000102-E | Copyright © 09/2016 by SIGMATEK GmbH & Co KG | All specifications are subject to change without notice.



STARTER KIT SSK 002



SIMPLY IMMERSE INTO THE

With the starter kit, we provide you with the perfect introduction into the automation world of SIGMATEK. You will get to know our modular control system with comfortable programming. Our high-performance controls in compact format can be flexibly expanded into economical system solutions – including Safety and motion control.



We applied the modularity of our automation complete solution to the SSK 002 starter kit: It consists of the basic control unit TSY 021 in combination with an HMI and motion expansion. You can also order the units individually based on requirements.

With the object-oriented engineering tool LASAL, programming or project development fast, clear and comfortable. A big plus: Once created, program components (machine functions) can be easily reused.



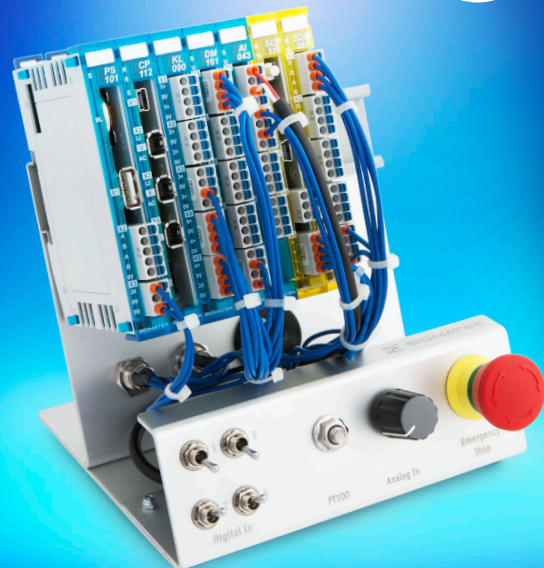
TSY 021

STARTER KITS BASIC

Standard and Safety control

- High-performance EDGE2 CPU (CP 112 + PS 101)
- Power supply module KL 090
- DM 161 (8 digital inputs; 8 short-circuit proof digital outputs)
- AI 043 (4 analog resistance or temperature inputs)
- Safety controller SCP 111
- SDM 081 (6 safe digital inputs; 2 safe digital outputs)
- 4 toggle switch (simulation of digital inputs)
- 1 potentiometer & PT100 temperature sensor each (simulation of analog inputs)
- 1 emergency stop button
- Power and Ethernet connector cable

€ 599
net



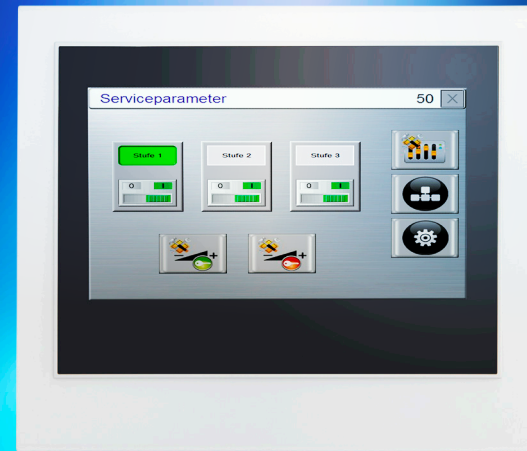
TSY 031

STARTER KITS HMI EXPANSION

Visualize, Monitor and Control with Compact Panels

- ETT 732 dual-touch operation panel (7" wide screen, projected capacitive)
- EDGE2 Technology processor
- 1x USB 2.0, 2x CAN bus, 1x RS232
- Data exchange with TSY 021 via Ethernet/TCP IP
- Ethernet connector cable

€ 399
net



TSY 041

STARTER KITS MOTION EXPANSION

Implementing simple axis applications

- VI 021 VARAN bus connection for communication with TSY 021
- Power supply module KL 090
- DM 081 (4 digital inputs; 4 short-circuit, digital outputs)
- 2x DC 062 servo axis module of control of servo motors with incremental encoder, enable input (STO), output for control of the motor holding brake.
- 4 toggle switch (simulation of digital inputs)
- 2 synchronous servo motors
- Power and Ethernet connector cable

€ 699
net



ORDER – SIGMATEK STARTER KIT

Complete set SSK 002

€ 1,599*

Art. No. 12-100-002

Consists of: TSY 021, TSY 031, TSY 041 in a practical carrier and storage case, as well as free standard training course

"Basis" TSY 021

€ 599*

Art. No. 12-100-021

"HMI Expansion": TSY 031

€ 399*

Art. No. 12-100-031

"Motion Expansion": TSY 041

€ 699*

Art. No. 12-100-041

All sets contain: LASAL software incl. documentation

*Non-binding price recommendation, excluding VAT.

General sales and delivery conditions apply. Only one per customer.

Name, First Name

Company

Function

Street

Postcode, location

Phone

E-Mail

Now order comfortable via Fax:

- ☐ +43/6274/43 21-18
- ☐ +49/6341/94 21-21
- ☐ +41/52/354 50 51

www.sigmatek-automation.com

